



BeyondSnow-Newsletter #2

Tools to Understand the Impact of Climate Change on
Your Territory and possible adaptations



BeyondSnow's Vulnerability Map: Understanding Your Vulnerability to Climate Change



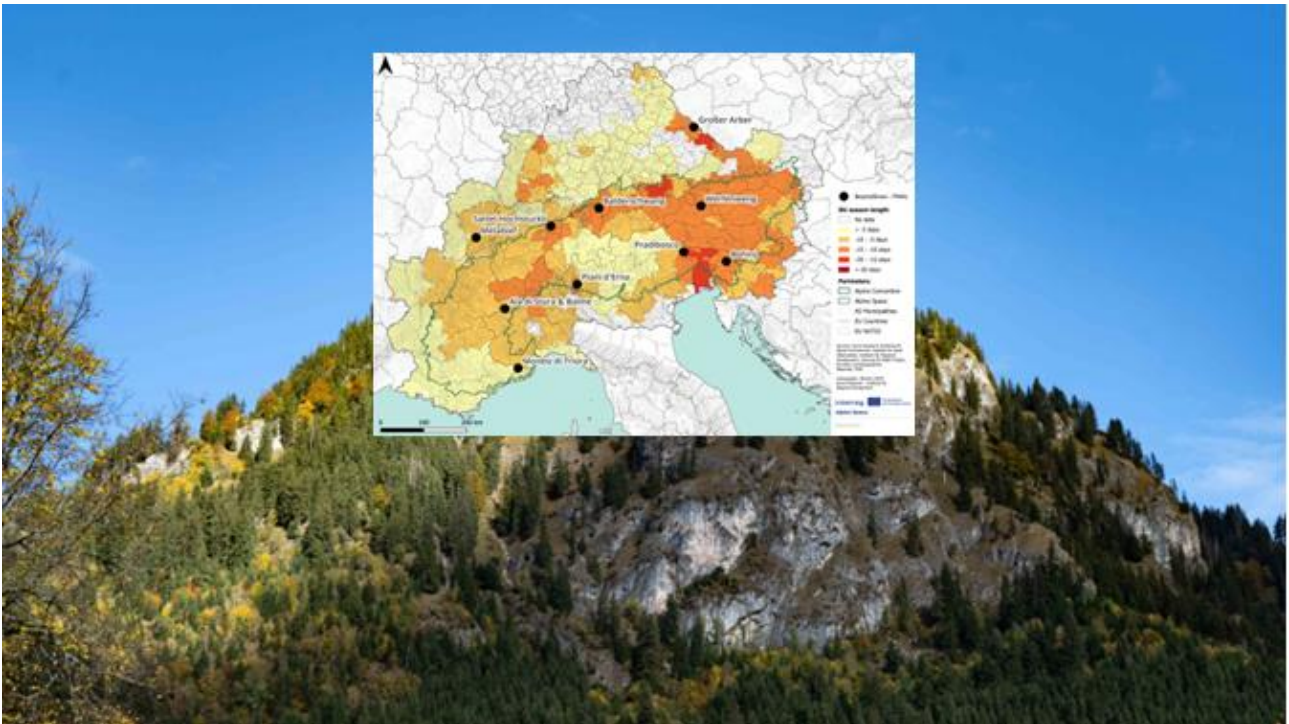
Ensuring the **resilience** of our mountain regions regarding climate change requires an understanding of their **vulnerability**. To tackle this challenge, the BeyondSnow project is developing a Vulnerability Map, a tool that **will enable mountain communities to assess their exposure to climate change** and devise more informed decisions for the future of their territories. In this video, **Andrea Omizzolo from Eurac Research** explains the development of the map and its benefits. [Watch the video now to learn more!](#)

Vulnerability and Resilience of Alpine Snow Tourism Destinations



The *Conceptual document on Alpine Snow Tourism Destinations' vulnerability and resilience* provides essential insights into vulnerability indicators and resilience approaches for snow tourism destinations. It's a vital tool for navigating challenges in our efforts to build resilient Alpine tourism destinations. [Read the document here.](#)

Building the Vulnerability Map: Our Scientific Foundations



Discover the **Vulnerability Map**, developed within the BeyondSnow project, and how it will help exploring the complexity of **vulnerabilities of Alpine territories regarding climate change**. This report provides a comprehensive overview that integrates biological, socio-ecological, and economic dimensions. [Read the report here.](#)

Effects of Climate Change on Alpine Snow Tourism Destinations



A report from the BeyondSnow project provides an overview of **the main effects of climate change on small snow tourism destinations** in the Alpine region currently affected or likely to be affected in the future by the lack of snow. [Read the report here.](#)

Experiences and Strategies of Communities Facing Climate Change



La *Fabrique des Transitions* argues that adaptation requires systemic change driven by vision and action. Examining **testimonies from 62 French mountain territories**, this report explores **how communities experience and address climate change**, showcasing real challenges and opportunities for transition & transformation. [Read the report here.](#)

Assessment of Tourism Systems in Pilot Working Areas



Our latest report provides a **detailed evaluation of tourism systems in our ten Pilot Working Areas**. Through quantitative and qualitative data, we explore environmental, physical, social, and economic aspects of each area, **guiding our sustainable development efforts effectively**.

[Learn more reading the report here.](#)